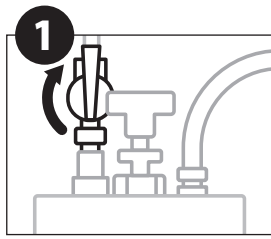
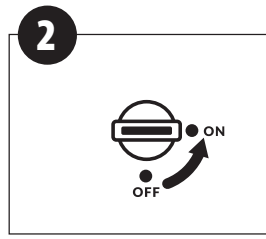


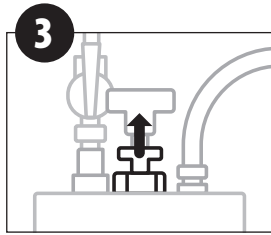
VACCURATE VACUUM GENERATOR OPERATING INSTRUCTIONS



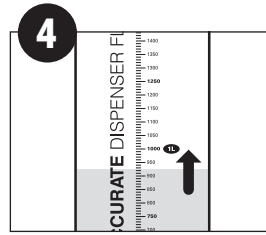
Turn flask tap to vertical position (ON)



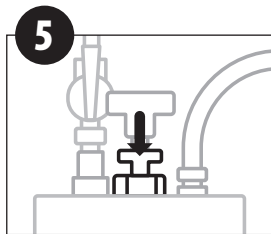
Turn ON
vaccurate air switch



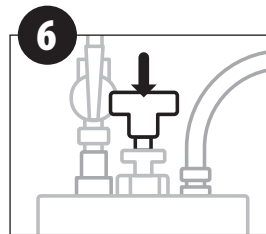
Lift seal on flask to
draw up chemical
under vacuum



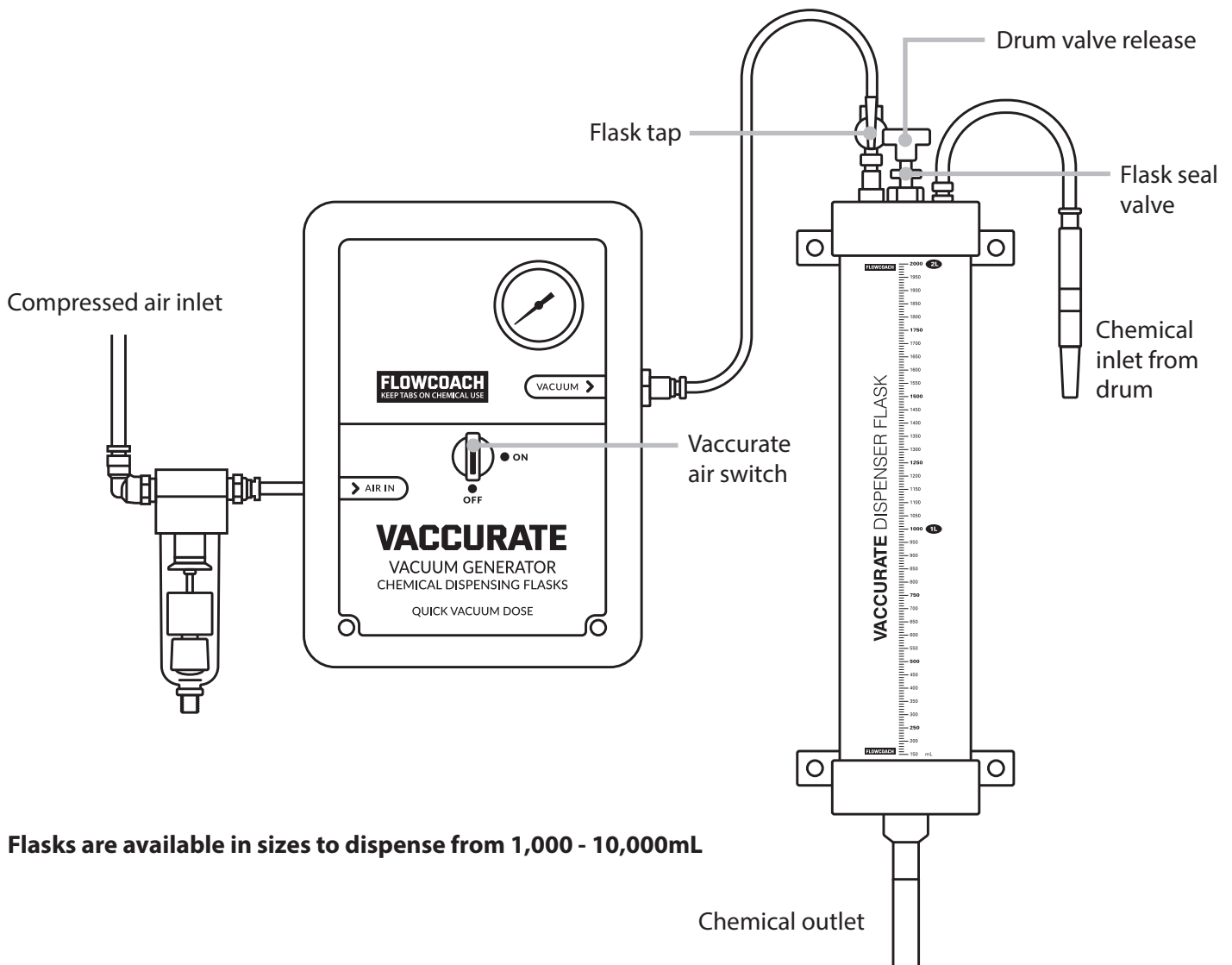
Measure chemical
to correct volume



Release valve to
break vacuum seal



Depress spring on drain
valve to release measured
chemical



Flasks are available in sizes to dispense from 1,000 - 10,000mL